

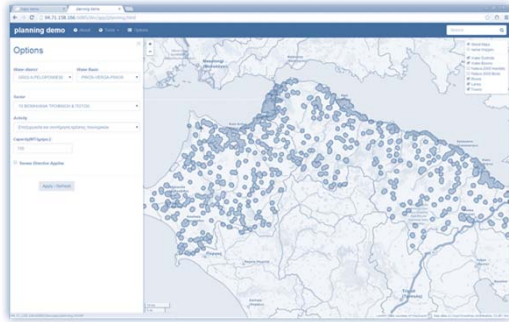
MEDITERRANEAN ENGINEERING GROUP 2014

International Conference

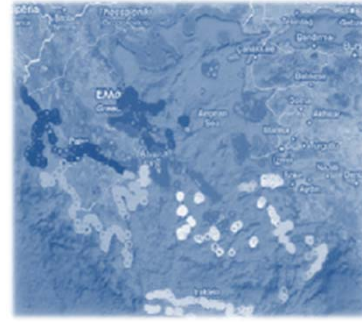
27-28 November, Rome, Italy

**wPRISMA and wPOLIS, two water quality
management tools under the SWITCH-ON
platform**

**Apostolos Tzimas, Managing Director
EMVIS Consultant Engineers**



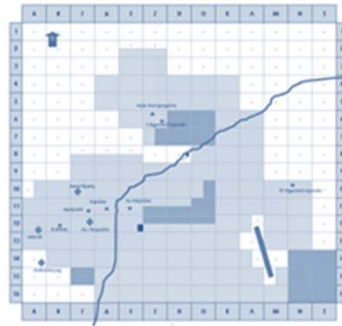
Feasibility studies



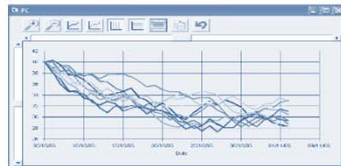
Audits & Due Diligence



Water Resources Management



Research



Technical Assistance

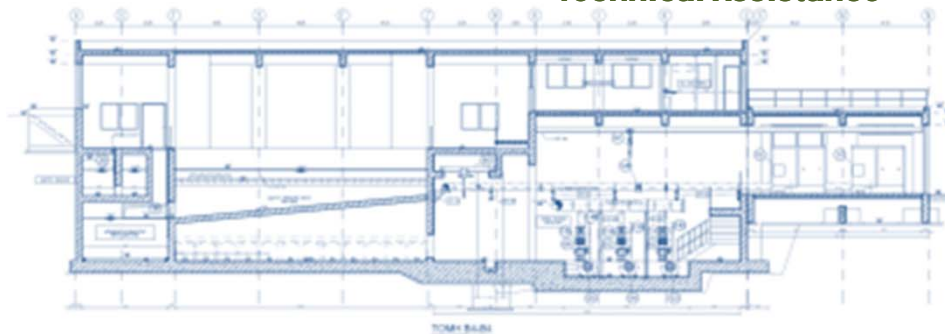
Process & Engineering Design



GIS & Water Modeling



Sewerage Networks



WWTPs



WATER

SWITCH-ON: Sharing Water-related Information to Tackle Changes in the Hydrosphere - for Operational Needs

Market & Policy



ENV.2013.6.5-3 Exploiting the European Open Data Strategy to mobilize the use of environmental data and information



Science

5 partners from 7 EU countries (Sweden, Italy, Germany, Netherlands, UK, Austria, Belgium)

• Budget: 1.7 million Euro (6 from EU)

Duration: 4 yrs

Coordinator: SMHI, Sweden

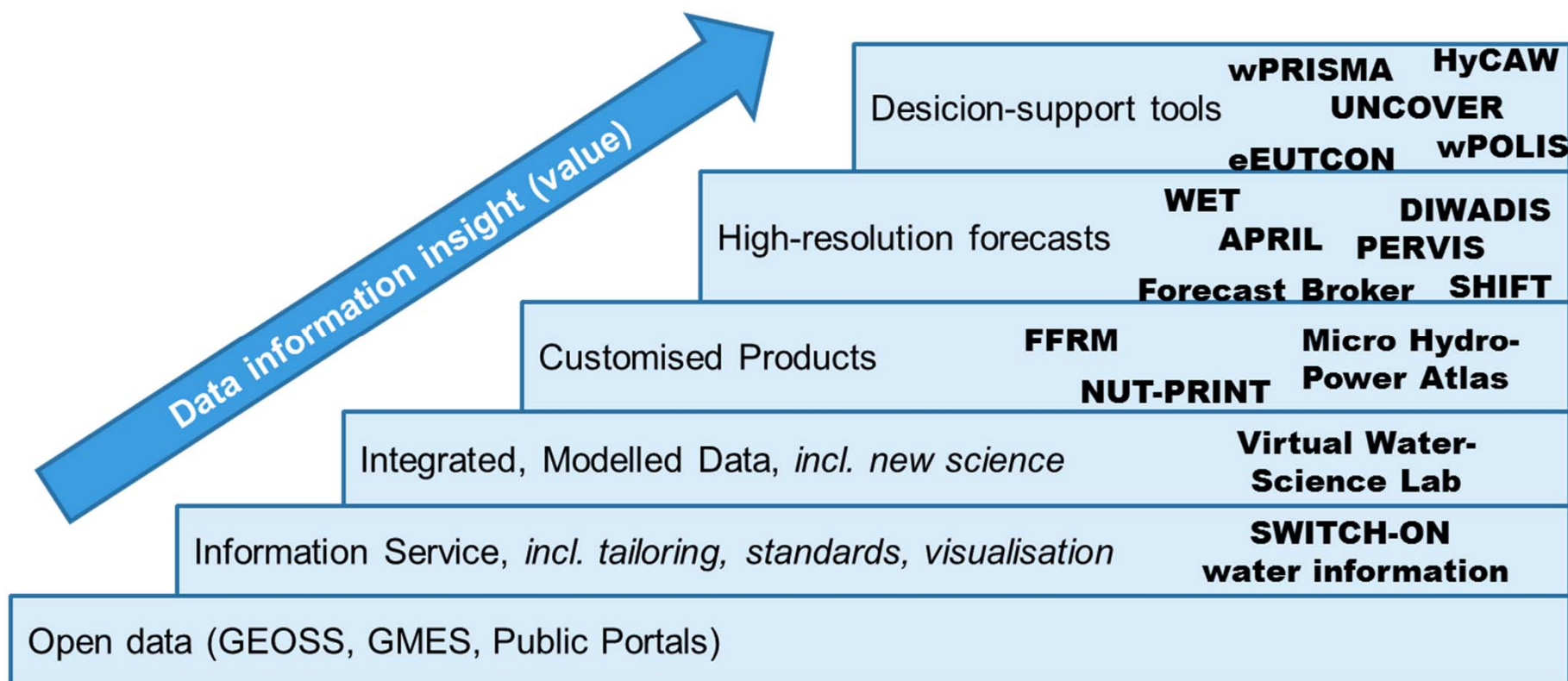


IT

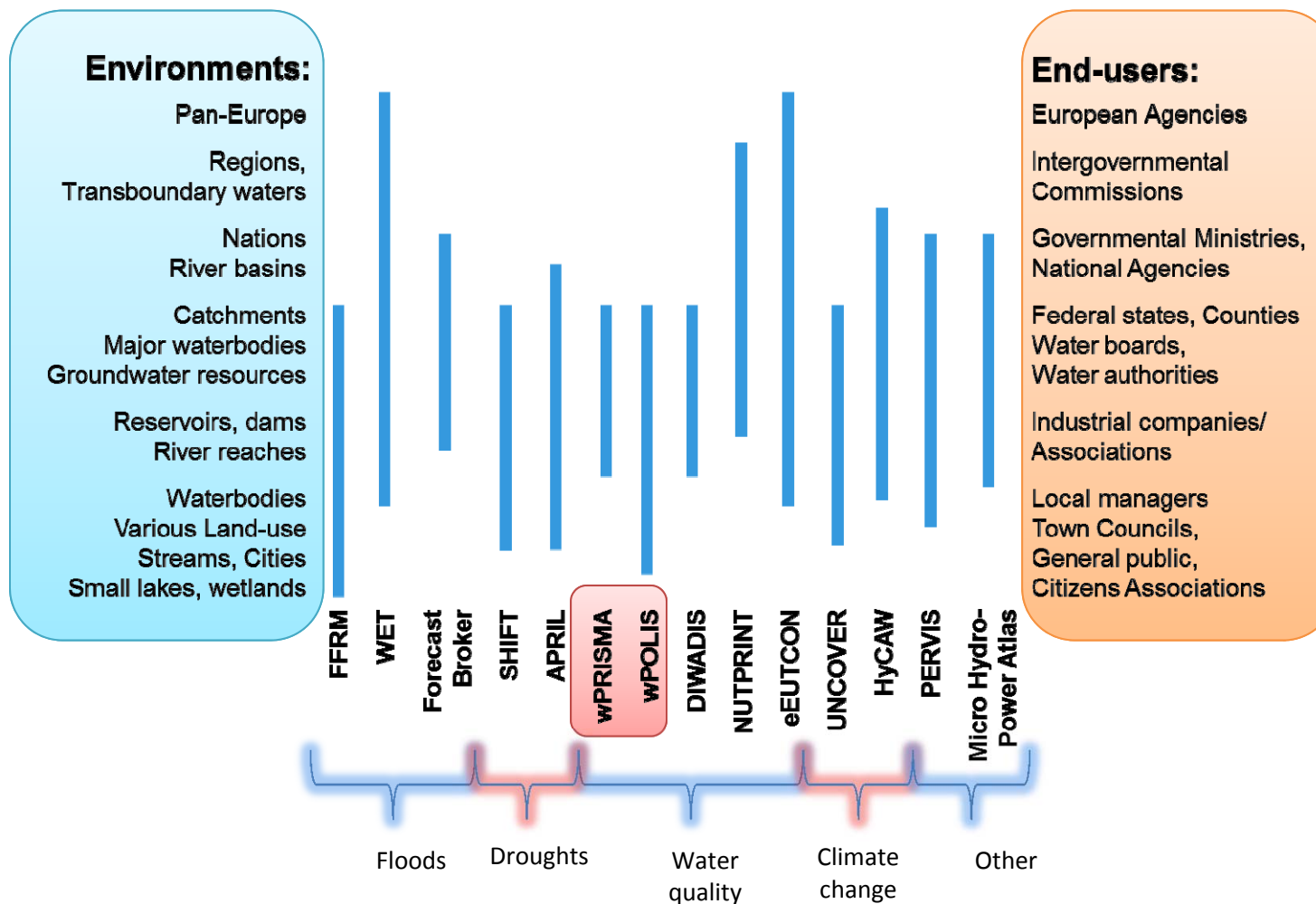


Goal of SWITCH-ON

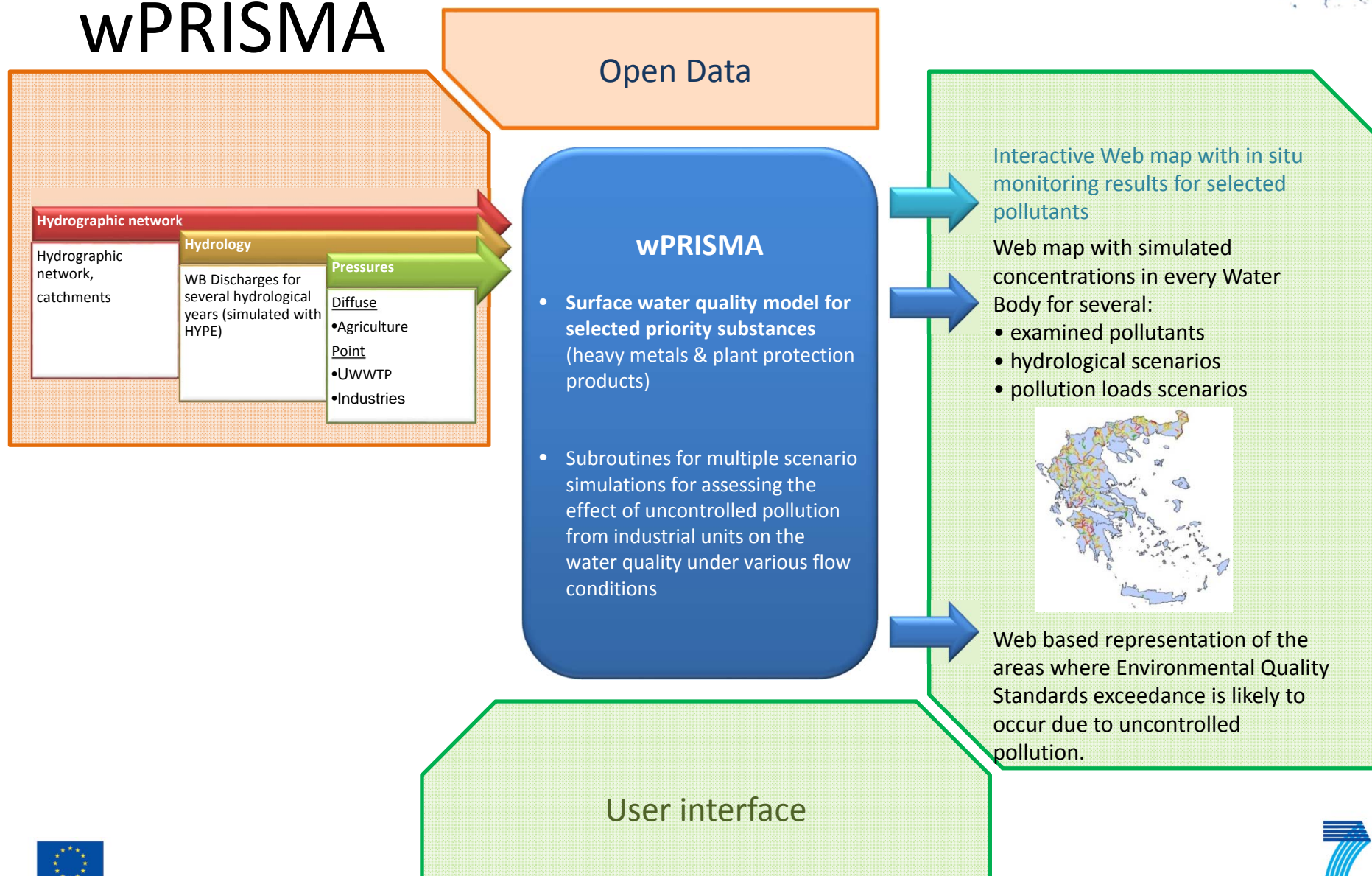
Value adding by re-purposing open data



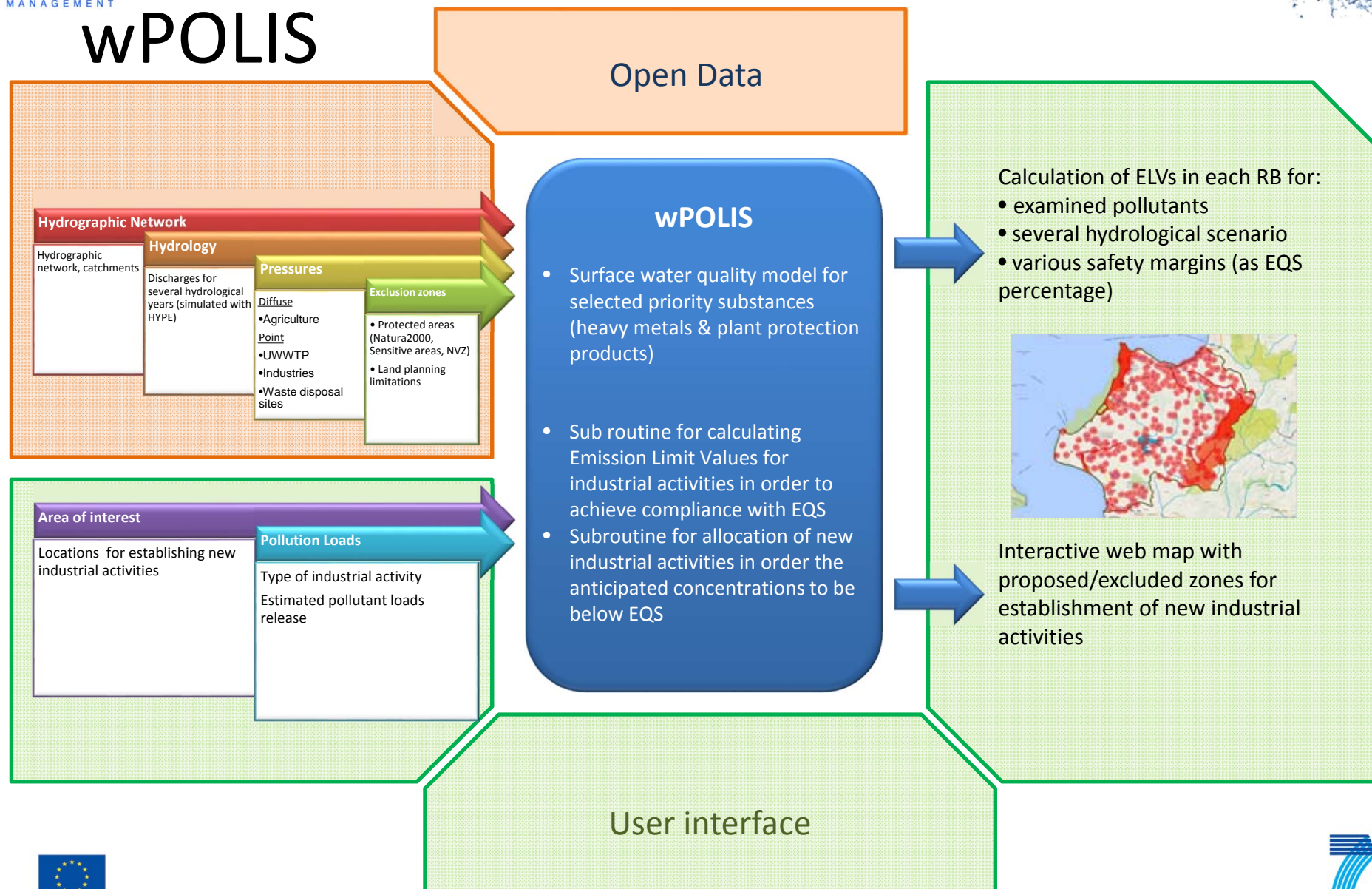
14 Innovative Commercial Products and Services



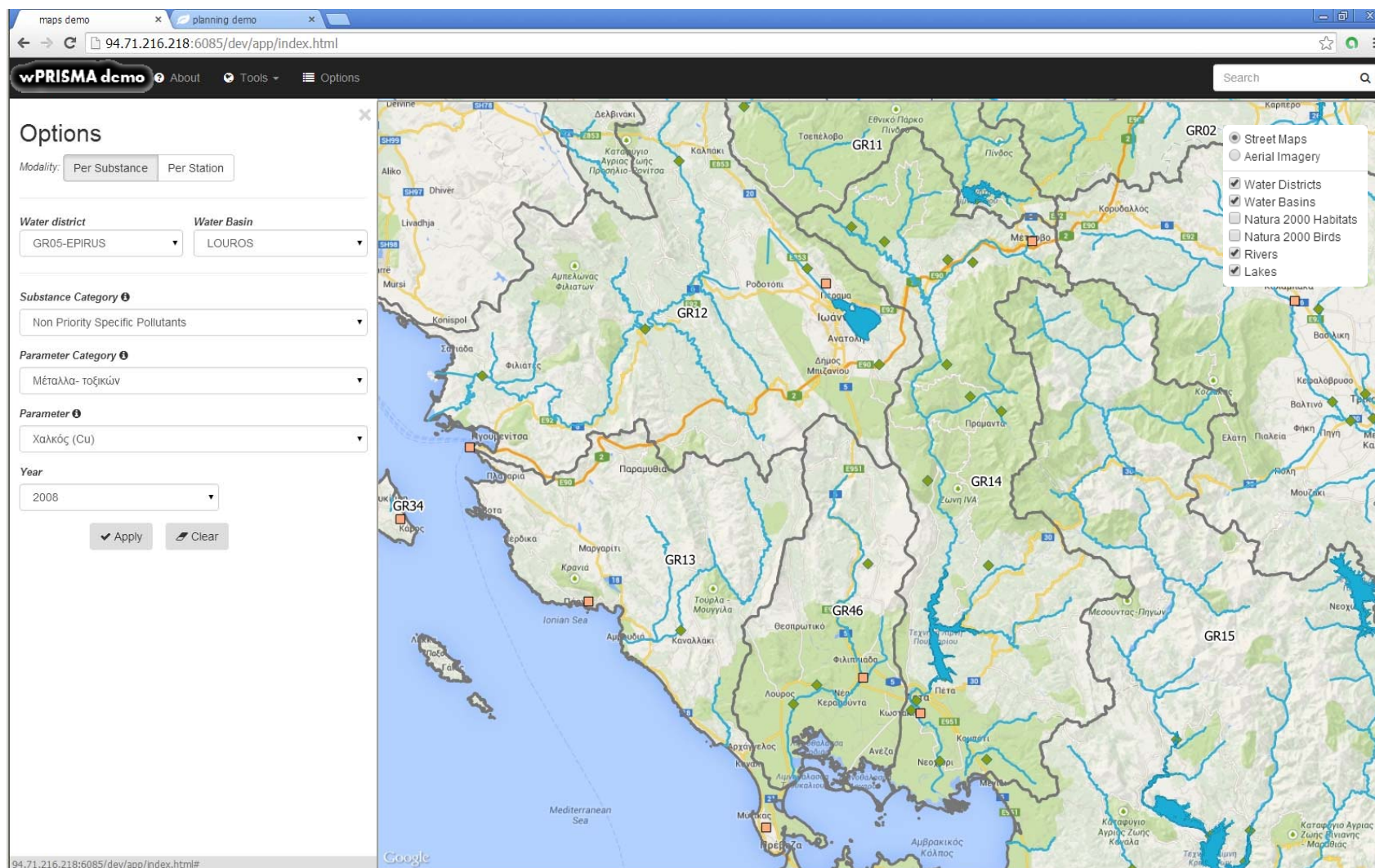
wPRISMA



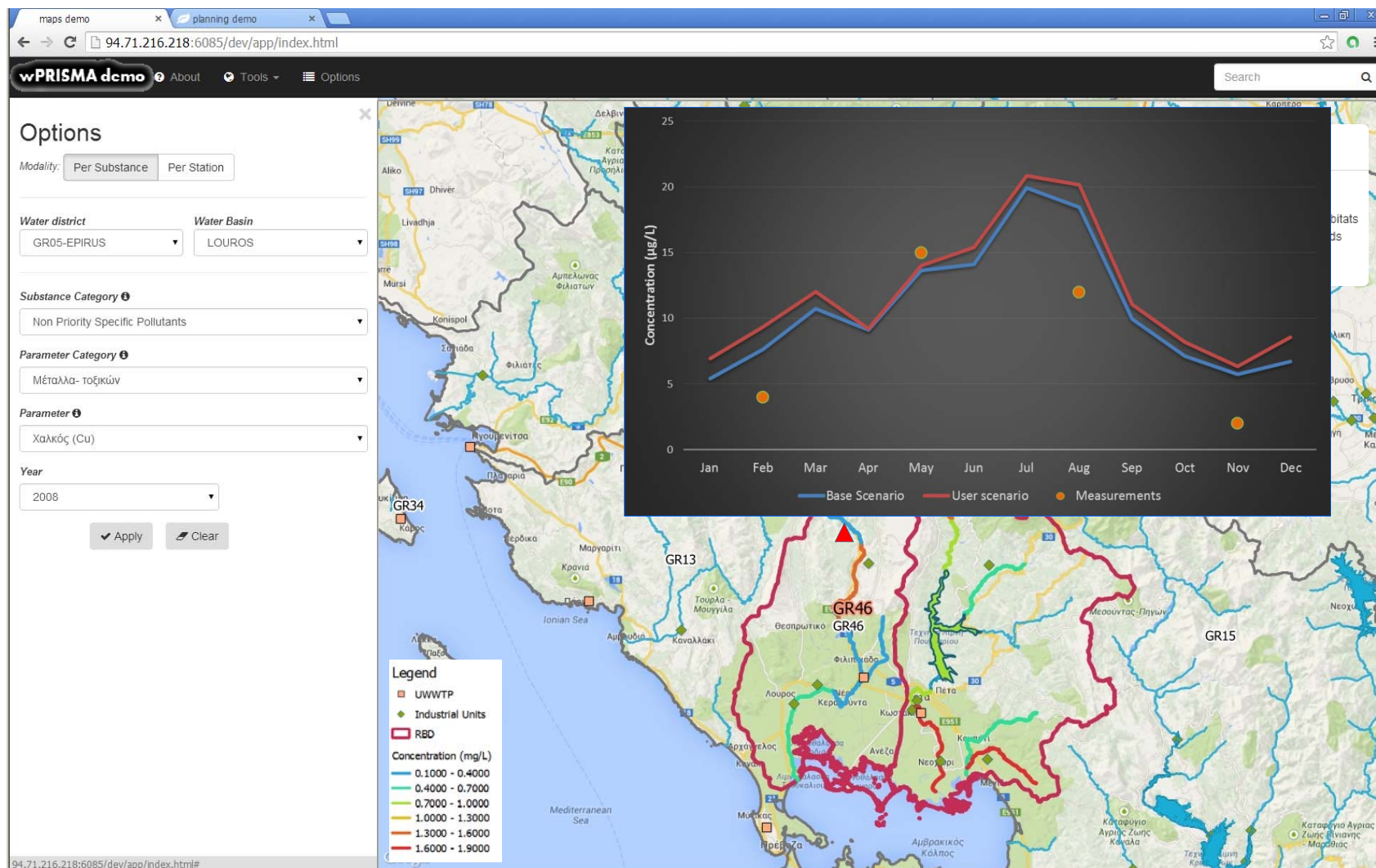
wPOLIS



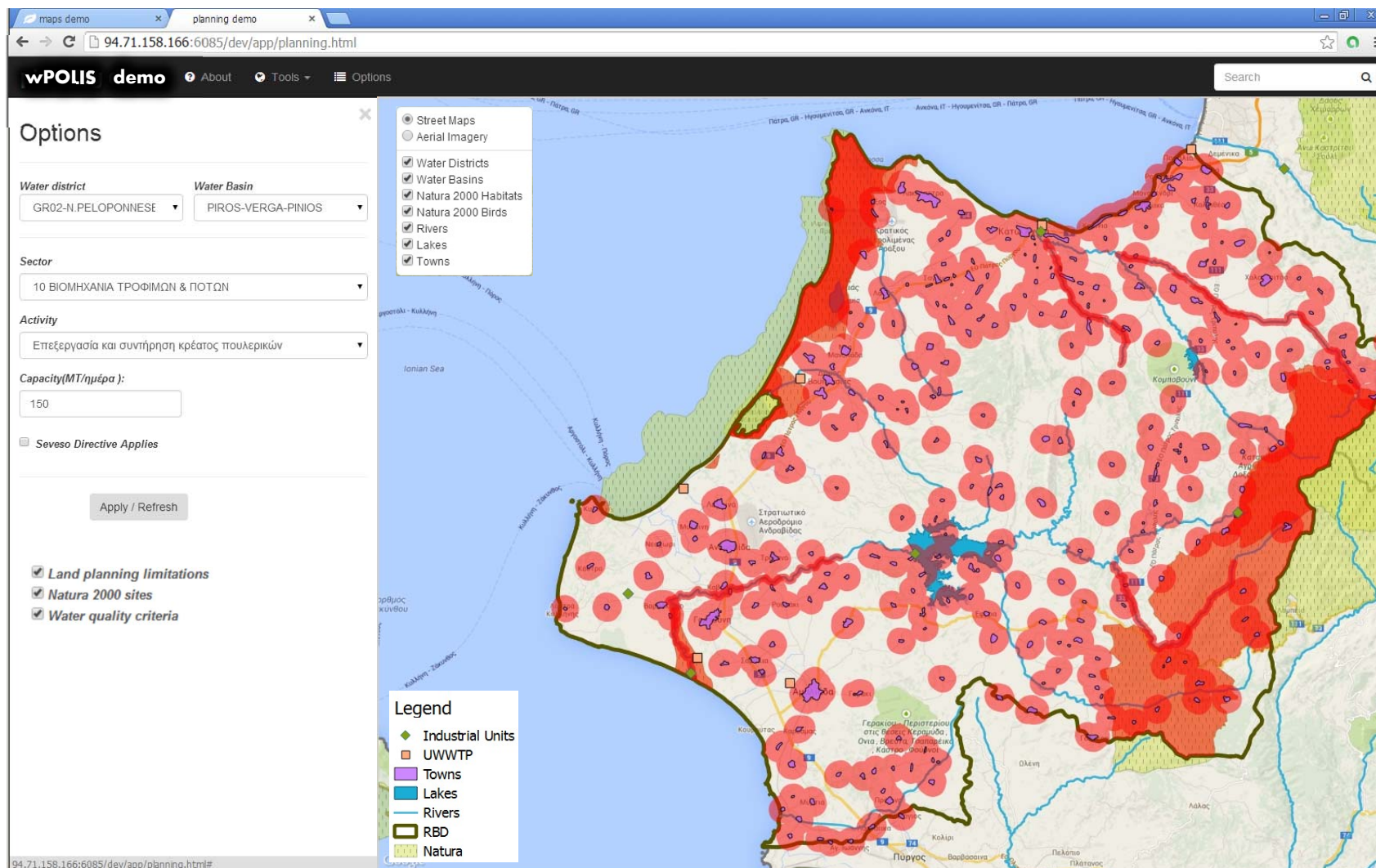
wPRISMA: Water Quality Map



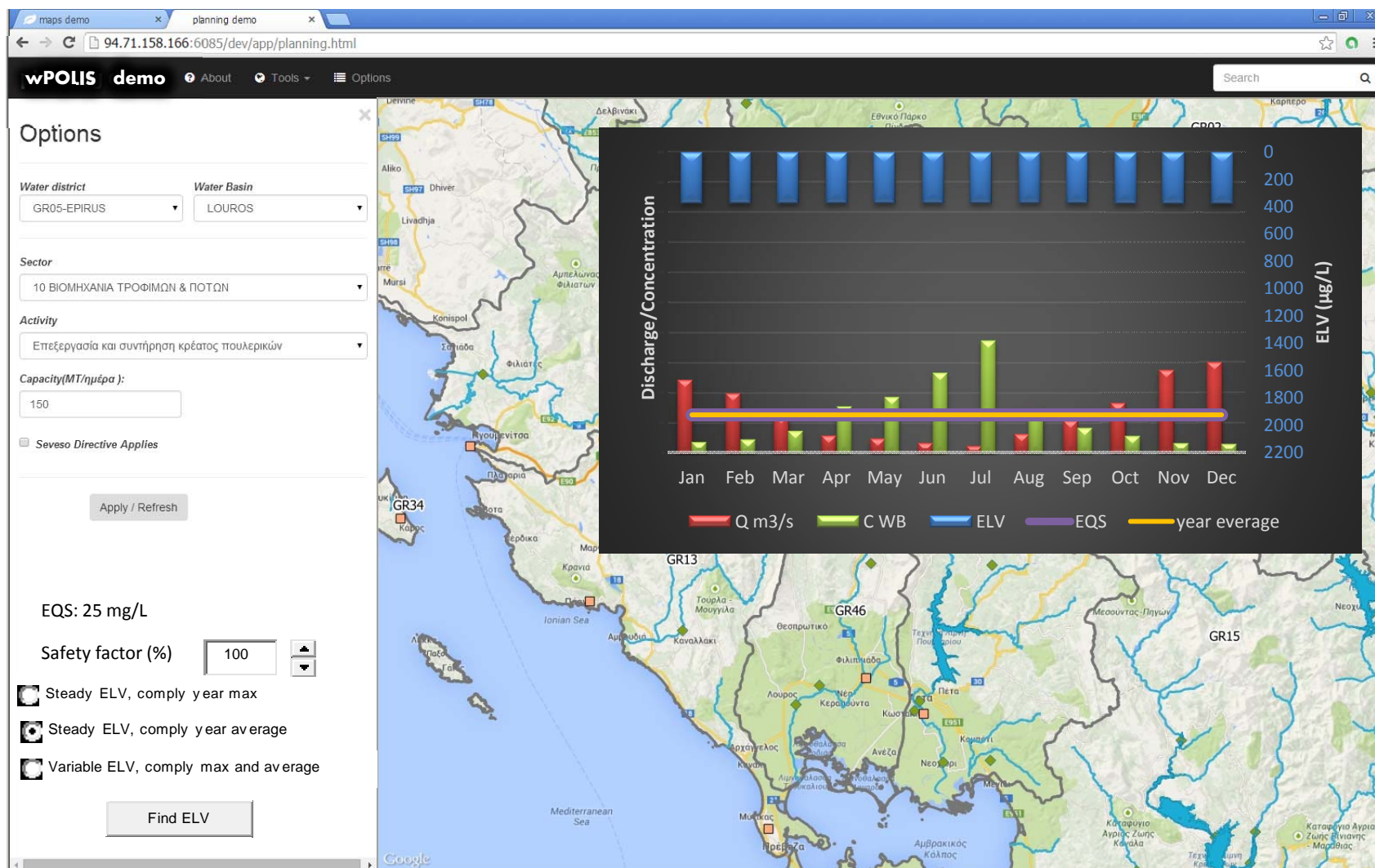
wPRISMA: Water Quality Map

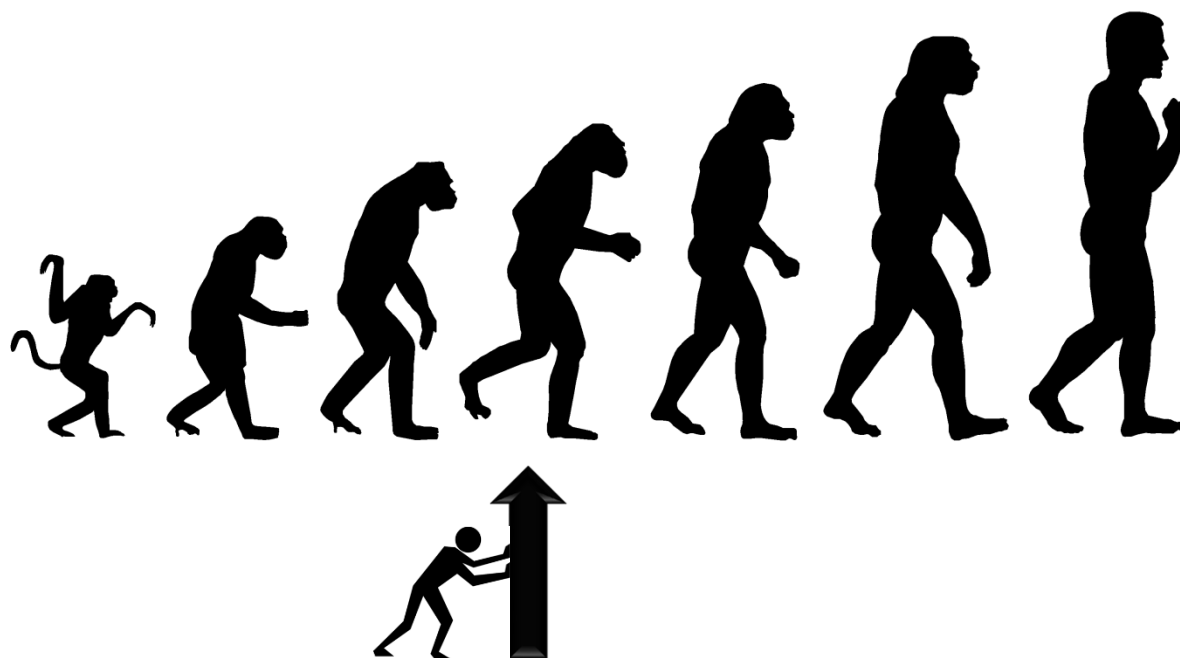


wPOLIS: Exclusion zones from industrial activity



wPOLIS: Emission Limit Values determination





First product run in test mode

[wPRISMA demo](#)

[wPOLIS demo](#)



Thank you

<http://www.water-switch-on.eu/>

<http://www.emvis.gr>